

## 2014 FORESTER

MODEL	SELECT NEW OR REVISED FEATURES (see specifications for complete list)	
All models	<ul style="list-style-type: none"> <li>• 6-speed manual transmission</li> <li>• Aluminum hood</li> <li>• Lineartronic® CVT transmission</li> <li>• Hill Descent Control (CVT models only)</li> <li>• X-mode (CVT models only)</li> <li>• Driver's knee air bag</li> <li>• Brake override system</li> <li>• Whiplash reducing front seats</li> <li>• New aluminum wheel design</li> <li>• Body-coloured door handles</li> <li>• New colours: Burnished Bronze Metallic, Crystal Black Silica, Jasmine Green Metallic, Venetian Red Pearl</li> <li>• Discontinued: 4-speed automatic, 5-speed manual, Deep Cherry Pearl, Obsidian Black Pearl, Sage Green Metallic</li> </ul>	
Forester 2.5i	<ul style="list-style-type: none"> <li>• 17-inch steel wheels with wheel covers</li> <li>• Information display: Clock, outside temperature, fuel efficiency (average and real time), travel time, driving range, average speed</li> </ul> <p><b>Convenience Package</b></p> <ul style="list-style-type: none"> <li>• 17-inch aluminum alloy wheels, 5-spoke design</li> <li>• Rear view camera (MFD display)</li> <li>• PZEV option</li> </ul> <p><b>Touring Package</b></p> <ul style="list-style-type: none"> <li>• AM/FM/CD/MP3/WMA audio system (display on MFD screen)with 6 speakers and steering wheel-integrated audio controls</li> <li>• Power rear liftgate with memory function</li> <li>• HD Radio</li> </ul> <p><b>Limited Package</b></p> <ul style="list-style-type: none"> <li>• Power rear liftgate with memory function</li> <li>• Automatic dual-zone climate control</li> <li>• Harman Kardon® 8-speaker system with 440 watt 8-channel amplifier</li> <li>• New chrome grille design</li> <li>• HID headlights with LED accent lighting</li> </ul> <p><b>Limited Package with EyeSight™ option</b></p> <ul style="list-style-type: none"> <li>• EyeSight™: Pre-collision braking, pre-collision brake assist, pre-collision throttle management, adaptive cruise control, lane departure warning, lane sway warning, lead vehicle start alert</li> <li>• Auto-dimming side-view mirrors with approach lighting</li> <li>• Multimedia system: Voice activated, in-dash GPS navigation system with 6.1-inch high-resolution touch screen, AM/FM/CD/MP3/WMA/DivX®/WMV/MP4, SMS text messaging capability, XM® NavTraffic (subscription required), Bluetooth® streaming audio, 3.5 auxiliary jack, USB, rear-view camera</li> <li>• Aha radio</li> </ul>	
Forester 2.0XT Touring	<ul style="list-style-type: none"> <li>• New 2.0 litre twin-scroll turbocharged engine with Direct Injection</li> <li>• 250 hp / 258 lb.ft</li> <li>• SI-DRIVE</li> <li>• Rear view camera (MFD display)</li> <li>• 18-inch aluminum alloy wheels, black and machined finish with high relief design</li> <li>• New chrome grille with sport design front bumper</li> <li>• Under hood ducted for intercooler airflow</li> <li>• AM/FM/CD/MP3/WMA audio system (display on MFD screen)with 6 speakers and steering wheel-integrated audio controls</li> <li>• 4.3-inch colour multi-function display with steering mounted controls (fuel, eco guide, vehicle dynamics monitor, clock, outside temperature, maintenance reminder, customizable settings)</li> <li>• HD Radio</li> </ul> <p><b>Limited Package</b></p> <ul style="list-style-type: none"> <li>• New chrome grille with sport design front bumper</li> <li>• Multimedia system: Voice activated, in-dash GPS navigation system with 6.1-inch high-resolution touch screen, AM/FM/CD/MP3/WMA/DivX®/WMV/MP4, SMS text messaging capability, XM® NavTraffic (subscription required), Bluetooth® streaming audio, 3.5 auxiliary jack, USB, rear-view camera</li> <li>• HID headlights with LED accent lighting</li> <li>• Power rear liftgate with memory function</li> <li>• Harman Kardon® 8-speaker system with 440 watt 8-channel amplifier</li> <li>• Auto-dimming side-view mirrors with approach lighting</li> </ul> <p><b>Limited Package with EyeSight® option</b></p> <ul style="list-style-type: none"> <li>• EyeSight™: Pre-collision braking, pre-collision brake assist, pre-collision throttle management, adaptive cruise control, lane departure warning, lane sway warning, lead vehicle start alert</li> <li>• Aha radio</li> </ul>	

# 2014 FORESTER



Forester 2.5XT Limited Package with EyeSight® option shown

- ❶ A distinctive feature of the 2.0XT lineup is the sporty front bumper that provides an updated look, while showcasing the differences between the two engine choices.
- ❷ Standard on the 2.0XT lineup are 18-inch aluminum alloy wheels with black and machined, high-relief finish. These have been designed to provide a high level of balance between aerodynamic performance and reduced weight.
- ❸ Weight reduction combined with the Lineartronic® CVT in the all new Forester equals excellent fuel economy. Models equipped with the Lineartronic® CVT will see fuel economy of 6.2 L/100 km on the highway and 8.3 L/100 km in the city.
- ❹ EyeSight™ is a revolutionary driver assist system that includes features such as adaptive cruise control, pre-collision braking, lane departure warning and much more.
- ❺ All models now have headlights that turn off and on automatically and offer an improved illumination pattern to allow better visibility at night.
- ❻ New to the Forester 2014 lineup is a 2.0L direct injection turbo engine that offers more power while maintaining excellent fuel efficiency.



- ❶ The 4.3-inch colour multi-function display, with steering wheel-mounted controls, features fuel data, eco-guide, vehicle dynamics monitor, clock, outside temperature gauge and maintenance reminder.
- ❷ The rear seats have been improved by raising the seat position, moving the seat back slightly, improving the cushioning and improving the seat belts. The rear space can now accommodate any number of passenger, child or cargo needs.
- ❸ X-Mode, which comes standard with all CVT-equipped models, is a new feature that allows the vehicle to control the brakes, throttle and other engine components to ensure improved traction in difficult driving conditions.
- ❹ All models with CVT include paddle shifters, for drivers who prefer a manual driving experience and more control during normal driving, rapid braking or sudden acceleration.
- ❺ Subaru's Active Head Restraints provide superior protection during rear-end collisions, by providing more support to the head and reducing or preventing whiplash injuries.
- ❻ An additional driver's knee airbag was added for 2014 and is standard on the entire Forester lineup. Along with dual front airbags, seat-mounted side airbags, side curtain airbags and front seatbelt pre-tensioners.

Product details based on the latest information available at the time of publication and are subject to change without notice or incurring obligation. © 2013 Subaru Canada, Inc.

# 2014 FORESTER

Manual Transmission	<b>2.5i</b>					<b>Touring Package</b>
	2.5L DOHC 6MT - EJ1 X0					2.5L DOHC 6MT - EJ1 TP
Automatic Transmission	<b>2.5i</b>	<b>Convenience Package</b>	<b>Touring Package</b>	<b>Limited Package</b>	<b>2.0XT Touring</b>	<b>Limited Package</b>
	2.5L DOHC CVT - EJ2 X0	2.5L DOHC CVT - EJ2 CP	2.5L DOHC CVT - EJ2 TP	2.5L DOHC CVT - EJ2 LP	2.0L DOHC TURBO CVT - EJ2 XT	2.0L DOHC TURBO CVT - EJ2 XTL
		<b>PZEV option</b>		<b>EyeSight™ option</b>		<b>EyeSight™ option</b>
		2.5L DOHC CVT - EJ2 PZ		2.5L DOHC CVT - EJ2 LPE		2.0L DOHC TURBO CVT - EJ2 XTE

## Forester 2.5i

Horizontally opposed, 4-cylinder, 2.5L SUBARU BOXER engine with Active Valve Control System  
 170 horsepower and 174 lb-ft of torque  
 6-speed Manual Transmission (6MT) with Hill Holder system or optional Lineartronic® CVT (Continuously Variable Transmission) transmission with manual mode  
 Standard open-type rear differential  
 X-mode (CVT models only)  
 Hill Descent Control (CVT models only)  
 Vehicle Dynamics Control system and Traction Control System  
 Anti-lock Braking System, Electronic Brake-force Distribution (EBD) and Brake Assist  
 Brake override system  
 Front brakes: Ventilated discs (294 x 24 mm), dual-piston calipers  
 Rear brakes: Solid discs (274 x 10 mm), single-piston calipers  
 Driver and front passenger front and side-impact airbags; side curtain airbags with rollover sensor; drivers knee airbag  
 Height-adjustable, active front head restraints  
 Driver seat 6-way manual adjust with height adjust  
 Passenger seat 4-way manual adjust  
 Engine immobilizer system and anti-theft security system  
 17-inch steel wheels with wheel covers and Yokohama® Geolandar All-Season tires

Whiplash-reducing front seats  
 Body-coloured exterior door handles  
 Information display: Clock, outside temperature, fuel efficiency (average and real time), travel time, driving range, average speed  
 Power-adjustable, foldable, heated, body-colour door mirrors  
 Privacy tinted glass on rear doors and cargo area  
 Raised-profile roof rails  
 AM/FM/CD/MP3/WMA audio system with 4 speakers, auxiliary audio input, Radio Data System, vehicle-speed-sensitive volume and text display with Bluetooth® streaming audio  
 Bluetooth® mobile phone connectivity with voice activation and steering wheel-mounted controls  
 MediaHub for iPod®/USB audio integration  
 Aluminum hood  
 Air conditioning with air filtration  
 Tilt-adjustable, telescopic steering wheel with integrated audio and cruise control  
 Heated front seats with high/low level settings  
 60/40-split, flat-folding rear seats  
 Power windows (driver's auto up/down)  
 Soft-grip controls  
 Premium cloth upholstery

## Convenience Package: Available on 2.5i (CVT only)

17-inch aluminum alloy wheels  
 10-way power-adjustable driver's seat including lumbar support  
 Automatic headlights  
 Rear tonneau cover  
 Paddle shifter (CVT only)  
 Rear view camera (MFD display)

Multi-reflector halogen fog lights  
 Upgraded information display: 4.3-inch colour multi-function display with steering mounted controls (fuel, eco guide, vehicle dynamics monitor, clock, outside temperature, maintenance reminder, customizable settings)  
 Cargo area tray  
 Rear seat armrest with cup holders  
 Adjustable front armrest console

Product details based on the latest information available at the time of publication and are subject to change without notice or incurring obligation. © 2013 Subaru Canada, Inc.

# 2014 FORESTER

## PZEV OPTION:

Available on Forester 2.5i Convenience Package

PZEV emissions equipment

PZEV rear badge

## EyeSight™ OPTION:

Available on Forester 2.5i Limited Package and 2.0XT Limited Package

Aha Radio®

Multimedia system: Voice activated, in-dash GPS navigation system with 6.1-inch high-resolution touch screen, AM/FM/CD/MP3/WMA/DivX®/WMW/MP4, SMS text messaging capability, XM® NavTraffic (subscription required), Bluetooth® streaming audio, 3.5 auxiliary jack, USB, rear-view camera

EyeSight™ system:

Pre-collision braking, pre-collision brake assist, pre-collision throttle management, adaptive cruise control, lane departure warning, lane sway warning, lead vehicle start alert

## Touring Package: Available on Forester 2.5i Convenience Package

17-inch aluminum alloy wheels

Power-sliding large glass sunroof

Multi-reflector halogen fog lights

Wiper de-icer

Reclining rear seats and rear-seat armrest with cup holders

Cargo area tray

Leather-wrapped gear selector and steering wheel

10-way power-adjustable driver's seat including lumbar support

Air conditioning with air filtration

Automatic dual-zone climate control

HD radio

Interior chrome door handles

AM/FM/CD/MP3/WMA (display on MFD screen) audio system with 6 speakers and steering wheel-integrated audio controls with Bluetooth® streaming audio

MediaHub for iPod®/USB audio integration

Bluetooth® mobile phone connectivity with voice activation and steering wheel-mounted controls

Door mirrors with LED integrated turn signals

Roofline spoiler

Black roof rails

Stainless steel exhaust tip

Power rear liftgate with memory function

Upgraded gauges

## Limited Package: Available on Forester 2.5i Touring Package (CVT only)

17-inch aluminum alloy wheels

Multi-reflector halogen fog lights

Wiper de-icer

Xenon High Intensity Discharge (HID) headlights (low beam) with LED accent lighting

Air conditioning with air filtration

Automatic dual-zone climate control

10-way power-adjustable driver's seat including lumbar support; driver and passenger's seatback storage pocket

Reclining rear seats and rear-seat armrest with cup holders

Chrome front grille

Electroluminescent gauges

Door shoulder chrome accent

Leather-wrapped gear selector and steering wheel

Retractable cargo cover and cargo area tray

Leather seating surfaces

Body-coloured door handles; stainless steel rear step pad and exhaust tip

Door mirrors with LED integrated turn signals

Power rear liftgate with memory function

Hill Decent Control

Roofline spoiler

Harman Kardon® 8-speaker system with 440-watt 8-channel amplifier

One-touch rear folding seats

XM® Satellite Radio

Auto dimming rear-view mirror

Auto dimming side-view mirrors with approach light

# 2014 FORESTER

## Forester 2.0XT Touring

Twin-scroll, turbocharged and intercooled, horizontally opposed, 4-cylinder, 2.0L SUBARU BOXER engine with Dual Active Valve Control System and direct injection

250 horsepower and 258 lb-ft of torque

Lineartronic® CVT (Continuously Variable Transmission) transmission with manual mode (6 and 8-speed)

Standard open-type rear differential

Vehicle Dynamics Control system and Traction Control System

Anti-lock Braking System, Electronic Brake-force Distribution (EBD) and Brake Assist

Front brakes: Ventilated discs (316 x 30 mm), dual-piston calipers

Front brakes: Ventilated discs (278 x 18 mm), single-piston calipers

Brake override system

X-mode

SI-DRIVE

Driver and front passenger front and side-impact airbags; side curtain airbags with rollover sensor

Driver knee air bag

Engine immobilizer system and anti-theft security system

18-inch aluminum alloy wheels, black and machined finish with high-relief design with Bridgestone Dueler All-Season tires

Power-adjustable, foldable, heated, body-colour door mirrors

Power-sliding large glass sunroof

Multi-reflector halogen fog lights

Raised-profile roof rails; roofline spoiler

Hill Descent Control

Whiplash reducing front seats with height and tilt adjustable head restraints

Privacy tinted glass on rear doors and cargo area

Body-coloured door handles

Interior chrome door handles

Stainless steel rear bumper step pad

Air conditioning with automatic climate control and air filtration

Leather-wrapped gear selector and steering wheel

Tilt-adjustable, telescopic steering wheel with integrated audio and cruise control

60/40-split, flat-folding rear seats

Heated front seats; 10-way power-adjustable driver's seat including lumbar support

Reclining rear seats and rear-seat armrest with cup holder

Power windows (driver's auto up/down)

Retractable cargo cover and cargo area tray

Cloth seating surfaces

Dual stainless steel exhaust

New chrome grille with sport design front bumper

Under hood ducted for intercooler airflow

Rear-view camera (MFD display)

AM/FM/CD/MP3/WMA (display on MFD) audio system with 6 speakers and steering-wheel integrated controls

Upgraded information display: 4.3-inch colour multi-function display with steering mounted controls (fuel, eco guide, vehicle dynamics monitor, clock, outside temperature, maintenance reminder, customizable settings)

HD radio

## Limited Package: Available on Forester 2.0XT Touring

New chrome grille with sport design front bumper

Power rear liftgate with memory function

Xenon High Intensity Discharge (HID) headlights (low beam) with LED accent lighting

Door mirrors with LED integrated turn signals

Upgraded guages

Auto-dimming side-view mirrors with approach lighting

Auto-dimming rear-view mirror

Harman Kardon® 8-speaker system with 440-watt 8-channel amplifier

XM® Satellite Radio

Air conditioning with automatic dual-zone climate control

One-touch rear folding seats

Leather seating surfaces

Wiper de-icer

# 2014 FORESTER

	2.5i	2.0XT
<b>ENGINE</b>		
Engine: 2.5L Dual Overhead Cam (DOHC), 16-valve, horizontally opposed, 4-cylinder SUBARU BOXER engine, Electronic Throttle Control and Active Valve Control System <b>Power: 170 hp @ 5800 rpm    Torque: 174 lb-ft @ 4100 rpm</b>	●	—
Engine: 2.0L Dual Overhead Cam (DOHC), 16-valve, horizontally opposed, 4-cylinder SUBARU BOXER engine with twin-scroll turbocharger and intercooler, Electronic Throttle Control and Dual Active Valve Control System with direct injection <b>Power: 250 hp @ 5600 rpm    Torque: 258 lb-ft @ 2000-4800 rpm</b>	—	●
Emissions: Meets Low Emission Vehicle (LEV2) standards	●	●
Emissions: Meets Partial Zero Emission Vehicle (PZEV) standards	CP (option)	—
Engine block: Open deck design, aluminum	—	●
Engine block: Semi-closed deck design, aluminum	●	—
Engine mounts: Solid rubber	●	—
Engine mounts: Liquid-filled rubber (CVT equipped models)	○	●
Engine top cover	—	●
Fuel injection: Direct injection	—	●
Fuel injection: Sequential multiport	●	—
Ignition system: Direct	●	●
PZEV emissions equipment	CP (option)	—
Spark plugs: Iridium-tipped	●	●
<b>TRANSMISSION AND DRIVETRAIN</b>		
6-speed Manual Transmission (6MT) with Hill Holder system	●	—
Flexible flywheel (MT only)	○/TP	—
Fully synchronized, including reverse	●	—
Hydraulically operated, dry single plate disc clutch	●	—
Starter interlock system (clutch pedal controlled)	●	●
Subaru symmetrical full-time All-Wheel Drive system: Viscous-coupling limited-slip centre differential	●	—
Lineartronic® CVT (Continuously Variable Transmission) with manual mode	○/CP/LP	—
Lineartronic® CVT (Continuously Variable Transmission) with manual mode with 6 and 8 manual modes	—	●
Lock-up torque converter	○	●
Paddle shifters	○/CP/LP	●
Transmission modes: Normal, Manual Mode	○/CP/LP	●
Transmission shift lock	○	●
SI-DRIVE	—	●
Subaru symmetrical full-time All-Wheel Drive system: Electronically controlled multi-plate transfer clutch	○/CP/LP	●
X-mode	●*	●
Differential (rear): Standard open type	●	●

Product details based on the latest information available at the time of publication and are subject to change without notice or incurring obligation. © 2013 Subaru Canada, Inc.

## 2014 FORESTER

	2.5i	2.0XT
<b>CHASSIS</b>		
Brake override system	●	●
Brakes: Power-assisted, dual-diagonal system	●	●
Brakes: ABS, 4-channel/4-sensor/4-wheel	●	●
Brakes: Electronic Brake-force Distribution (EBD)	●	●
Brakes: Brake Assist	●	●
Brakes (front): Ventilated discs (294 x 24 mm), dual-piston calipers	●	—
Brakes (front): Ventilated discs (316 x 30 mm), dual-piston calipers	—	●
Brakes (rear): Solid discs (274 x 10 mm), single-piston calipers	●	—
Brakes (rear): Ventilated discs (278 x 18 mm), single-piston calipers	—	●
Hill Descent Control	●*	●
Steering: Engine-speed-sensitive, electric, rack and pinion	●	●
Structure: Advanced ring-shaped reinforcement frame	●	●
Structure: Dual, side-impact door beams (front and rear)	●	●
Structure: Energy-absorbing crumple zones (front and rear)	●	●
Suspension: 4-wheel fully independent	●	●
Suspension: Stabilizer bar (front and rear)	●	●
Suspension (front): MacPherson strut with lower L-arm	●	●
Suspension (rear): Double-wishbone	●	●
<b>SAFETY AND SECURITY</b>		
Airbags (SRS): Driver dual-stage deployment	●	●
Airbags (SRS): Driver knee	●	●
Airbags (SRS): Front passenger dual-stage deployment with occupant detection system	●	●
Airbags (SRS): Front seat side-impact	●	●
Airbags (SRS): Side curtain with rollover sensor	●	●
Assist grips: Outboard seating positions	●	●
Brake pedal: Retractable	●	●
Child safety: Rear door locking system	●	●
Child safety: Rear seat ISO-FIX/LATCH anchor system	●	●
Driver's footrest: Impact-absorbing	●	●
Head restraints (front): Height and tilt-adjustable	●	●
Head restraints (rear): Removable and adjustable	●	●
Seats (front): Whiplash reducing	●	●
Seatbelts: Engagement indicator and warning buzzer	●	●
Seatbelts (front): 3-point with pretensioners and load limiters (Driver – ELR / Passenger – ELR)	●	●
Seatbelts (front): Height-adjustable shoulder belt anchors	●	●
Seatbelts (rear): 3-point, all seating positions (ELR)	●	●
Seatbelts (rear): Integrated outboard shoulder belt anchors	●	●
Security: Anti-theft system	●	●
Security: Engine immobilizer system	●	●
Security: Keyless entry system with panic alarm	●	●

Product details based on the latest information available at the time of publication and are subject to change without notice or incurring obligation. © 2013 Subaru Canada, Inc.

● Standard  
— Not Available

CP Standard with Convenience Package  
TP Standard with Touring Package  
LP Standard with Limited Package

○ Optional  
1 Also available as an accessory  
\* CVT only

# 2014 FORESTER

	2.5i	2.0XT
<b>SAFETY AND SECURITY (continued)</b>		
Steering column: Collapsible	●	●
Traction Control System	●	●
Vehicle Dynamics Control system with lateral-g and yaw-rate sensor	●	●
<b>EXTERIOR FEATURES</b>		
Badging (rear): PZEV	CP (option)	—
Body: Anti-corrosion treatment	●	●
Body: Dual-sided galvanized steel	●	●
Bumper (front): Sport design	—	●
Bumper (rear): Stainless steel step pad <sup>1</sup>	LP	●
Cargo access: Liftgate	●	●
Cargo access: Power liftgate with memory function	TP/LP	LP
Door mirrors: Integrated LED turn signals	LP	LP
Door mirrors: Power-adjustable, foldable and heated (body colour)	●	●
Door mirrors: Auto-dimming side-view mirrors with approach lighting	LP	LP
Doors handles: Body colour	●	●
Exhaust: Single tip	●	—
Exhaust: Single, stainless steel tip	TP/LP	—
Exhaust: Dual, stainless steel tips	—	●
Fog lights: Multi-reflector halogen <sup>1</sup>	CP/TP/LP	●
Grille: Chrome	LP	●
Headlights: Automatic	●	●
Headlights: Daytime Running Lights (DRL)	●	●
Headlights: Contoured multi-reflector halogen (high beam)	●	●
Headlights: Contoured multi-reflector halogen (low beam)	●	●
Headlights: Contoured multi-reflector Xenon High Intensity Discharge (HID) (low beam) with auto leveling and LED accent lighting	LP	LP
Hood: Aluminum with gas strut support	●	●
Hood: Under hood ducted for intercooler air flow	—	●
Roof rack: Raised-profile roof rails	●	—
Roof rack: Raised-profile roof rails with silver finish	—	●
Sunroof: Large glass, power-sliding with sunshade	TP/LP	●
Spoiler: Roofline	TP/LP	●
Tire (spare): T145/80 D17 110M Bridgestone® Tracomp-2 (under cargo area)	●	●
Tires: 225/60 R17 98H Yokohama Geolandar G91 M+S All Season	●	—
Tires: 225/55 R18 97H Bridgestone Dueler H/L 400 M+S All Season	—	●
Wheels: 17" x 7" styled steel	●	—
Wheels: 17" x 7" aluminum alloy, 5 spoke design	CP/TP/LP	—
Wheels: 18" x 7" aluminum alloy, black and machined finish with high-relief design	—	●
Windows: Privacy tinted glass (rear doors and cargo area)	●	●

Product details based on the latest information available at the time of publication and are subject to change without notice or incurring obligation. © 2013 Subaru Canada, Inc.



## 2014 FORESTER

	2.5i	2.0XT
<b>EXTERIOR FEATURES (continued)</b>		
Windshield: Laminated UV protection and tinted	●	●
Windshield: Wiper de-icer	TP/LP	TP/LP
Wipers (windshield): Variable intermittent with washer	●	●
Wiper (rear window): Intermittent and continuous mode with washer	●	●
Window (rear): Defogger with timer	●	●
<b>SEATING AND TRIM</b>		
Accents/trim: Titanium finish	●	●
Door handles (interior): Black	●	—
Door handles (interior): Chrome	TP/LP	●
Floor mats	●	●
Interior: Premium cloth upholstery	●	●
Interior: Leather seating surfaces	LP	LP
Gear selector: Soft-grip (CVT models only)	●	—
Gear selector: Leather-wrapped	TP/LP	●
Parking brake: Soft-grip	●	●
Seat (driver's): 6-way manually adjustable	●	—
Seat (driver's): 10-way power-adjustable, including power lumbar support	CP/TP/LP	●
Seat (front): Passenger, 4-way manually adjustable	●	●
Seats (front): Heated with high/low level settings	●	●
Seats (front): Reclining bucket	●	●
Seats (rear): 60/40-split, flat-folding	●	●
Seats (rear): Contoured bench	●	●
Seats (rear): One-touch folding	LP	LP
Seats (rear): Reclining	TP/LP	●
Seats (rear): Folding centre armrest	CP/TP/LP	●
Steering wheel: Soft-grip	●	—
Steering wheel: Leather-wrapped	TP/LP	●
<b>AUDIO AND TECHNOLOGY</b>		
Audio: AM/FM/CD/MP3/WMA system	●	—
Audio: AM/FM/CD/MP3/WMA system (display on MFD screen)	TP/LP	●
Aha Radio	LP (option)	LP (option)
Antenna: Roof-mounted	●	●
Audio controls: Illuminated, steering wheel integrated	●	●
Auxiliary input: Audio source in armrest console	●	●
Bluetooth® mobile phone connectivity with voice activation and steering wheel-mounted controls with Bluetooth® streaming audio	●	●
HD radio	TP/LP	●
MediaHub: iPod®/USB audio integration	●	●

Product details based on the latest information available at the time of publication and are subject to change without notice or incurring obligation. © 2013 Subaru Canada, Inc.

● Standard  
— Not Available

CP Standard with Convenience Package  
TP Standard with Touring Package  
LP Standard with Limited Package

○ Optional  
1 Also available as an accessory

# 2014 FORESTER

	2.5i	2.0XT
<b>AUDIO AND TECHNOLOGY (continued)</b>		
Multimedia system: Voice activated, in-dash GPS navigation system with 6.1-inch high-resolution touch screen, AM/FM/CD/MP3/WMA/DivX®/WMV/MP4, SMS text messaging capability, XM® NavTraffic (subscription required), Bluetooth® streaming audio, 3.5 auxiliary jack, USB, rear-view camera	LP (option)	LP (option)
Radio Data System	●	●
Rear-view camera (MFD display)	CP/TP/LP	●
Satellite radio: XM® Satellite Radio (free 3-month subscription included)	LP	LP
Speakers: 4-speaker system	●	—
Speakers: 6-speaker system	TP	TP
Speakers: Harman Kardon® 8-speaker system with 440 watt 8-channel amplifier	LP	LP
Text display	●	●
<b>COMFORT AND CONVENIENCE</b>		
Armrest (front): Sliding (CVT only)	CP/TP/LP	●
Bottle holders (front): Door integrated (2)	●	●
Bottle holders (rear): Door integrated (2)	●	●
Climate control: Air conditioning with air filtration	●	●
Climate control: Automatic dual-zone	TP/LP	LP
Climate control: Rear seat heating/ventilation/air conditioning ducts	●	●
Cruise control: Steering wheel integrated	●	●
Cup holders (front): Console integrated (2)	●	●
Glove box: Lockable	●	●
Ignition key ring: Illuminated	●	●
Light: Ambient overhead	●	●
Light: Front door courtesy light	●	●
Light: Interior dome with off delay	●	●
Light: Map spotlights	●	●
Pedal: Driver's footrest	●	●
Power outlet: 12V in armrest console and in dash	●	●
Rear-view mirror: Auto-dimming	LP	LP
Steering wheel: Tilt-adjustable, telescopic	●	●
Storage: Multi-function console compartment with removable partition	●	●
Storage: Door compartments (front and rear)	●	●
Storage: Illuminated tray, centre console	●	●
Storage: Driver seatback pocket	TP/LP	LP
Storage: Passenger seatback pocket	●	●
Storage: Rear-seat armrest with cup holders	CP/TP/LP	●
Visor: Dual, with mirrors	●	●
Windows (power): Driver's window auto up/down	●	●
Windows (power): Illuminated switches, driver's side	●	●

Product details based on the latest information available at the time of publication and are subject to change without notice or incurring obligation. © 2013 Subaru Canada, Inc.

# 2014 FORESTER

	2.5i	2.0XT
<b>INSTRUMENTS</b>		
EyeSight™: Pre-collision braking, pre-collision brake assist, pre-collision throttle management, adaptive cruise control, lane departure warning, lane sway warning, lead vehicle start alert	LP (option)	LP (option)
Gauges: Full needle sweep on start-up	●	●
Gauges: Analog, positive LCD screen, silver coated ring, black background with red illuminated needles	●	–
Gauges: Analog, negative LCD screen, silver plated ring, black and silver background with red illuminated needles	TP	TP
Gauges: Analog, electro-luminescent cluster, negative LCD screen, black plated ring, black background with red illuminated needles	LP	LP
Information display: Clock, outside temperature, fuel efficiency (average and real time), travel time, driving range, average speed	●	–
Information display: 4.3-inch colour multi-function display with steering mounted controls (fuel, eco guide, vehicle dynamics monitor, clock, outside temperature, maintenance reminder, customizable settings)	CP/TP/LP	●
Instrument panel: Adjustable dash illumination	●	●
Instrument panel: Coolant temperature indicator	●	●
Instrument panel: ECO gauge	●	TP
Instrument panel: Fuel gauge with low fuel warning light and fuel door location indicator	●	●
Instrument panel: Low washer fluid indicator	●	●
Instrument panel: Low engine oil indicator	●	●
Instrument panel: Manual Mode gear position and mode indicator (CVT equipped models)	●	●
Odometer: Digital, dual trip modes	●	●
Speedometer: Electronically controlled analog	●	●
Tachometer: 8000 rpm maximum	●	●

<b>CARGO AREA</b>		
Cargo cover: Retractable <sup>1</sup>	CP/TP/LP	●
Cargo tie-down hooks (4)	●	●
Cargo tray/protective mat <sup>1</sup>	CP/TP/LP	●
Light: Cargo area	●	●
Power outlet: 12V (3)	●	●
Storage: Sub-floor compartment	●	●
Utility hooks (4)	●	●

Product details based on the latest information available at the time of publication and are subject to change without notice or incurring obligation. © 2013 Subaru Canada, Inc.

# 2014 FORESTER

	2.5i	2.0XT
<b>Measurements</b>		
<b>FUEL ECONOMY</b>		
Manual transmission (City/Hwy) (L/100 km)	9.5 / 7.0	–
Manual transmission (City/Hwy) (Imperial MPG)	30 / 40	–
Automatic transmission (City/Hwy) (L/100 km)	8.3 / 6.2	8.9 / 7.2
Automatic transmission (City/Hwy) (Imperial MPG)	34 / 46	32 / 39
Recommended minimum octane (AKI) (required octane)	87	91 <sup>†</sup>
Fuel tank capacity (L)	60	60
<b>GENERAL WEIGHTS</b>		
Curb weight: Manual transmission (kg)	N/A	N/A
Curb weight: Automatic transmission (kg)	N/A	N/A
Gross Vehicle Weight Rating (GVWR) (kg)	N/A	N/A
<b>TOWING CAPACITY</b> †Please review Owner's Manual for details.		
Maximum weight (kg) with trailer brakes <sup>†</sup>	680	680
Maximum weight (kg) without trailer brakes <sup>†</sup>	453	453
Maximum tongue weight (kg)	80	80
<b>EXTERIOR</b>		
Length (mm)	4595	4595
Width (mm) without mirrors	1795	1795
Width (mm) with mirrors	2031	2031
Width (mm) with mirrors (LED turn signals)	2046	2046
Height (mm) with roof rails	1735	1735
Wheelbase (mm)	2640	2640
Track: Front (mm)	1545	1545
Track: Rear (mm)	1550	1550
Minimum ground clearance (at curb weight) (mm)	220	220
Steering: Turning circle (curb-to-curb) (m)	5.3	5.3
Drag coefficient (cd)	0.33	0.33
<b>INTERIOR</b>		
Headroom: Front (mm) (*with sunroof)	1052 / *1015	1052 / *1015
Headroom: Rear (mm) (*with sunroof)	1012 / *952	1012 / *952
Legroom: Front (mm)	1093	1093
Legroom: Rear (mm) (minimum)	965	965
Shoulder room: Front (mm)	1448	1448
Shoulder room: Rear (mm)	1434	1434
Hip room: Front (mm)	1369	1369
Hip room: Rear (mm)	1346	1346
Volume: EPA passenger (L) (*with sunroof)	3203 / *3053	3203 / *3053

† 91 AKI recommended to achieve stated engine output.

Product details based on the latest information available at the time of publication and are subject to change without notice or incurring obligation. © 2013 Subaru Canada, Inc.

## 2014 FORESTER

	2.5i	2.0XT
<b>CARGO AREA</b>		
Cargo volume (seats up) (L) (EPA) (*with sunroof)	974 / *892	974 / *892
Cargo volume (seats folded flat) (L) (EPA) (*with sunroof)	2115 / *1940	2115 / *1940
Floor length (seats folded flat) (mm)	1566	1566
Floor length (seats up) (mm)	873	873
Height (mm) (*with sunroof)	884 / *811	884 / *811
Cargo floor to ground height (mm)	726	726
Width between wheel wells (mm)	1073	1073
<b>GEAR RATIOS</b>		
<b>Manual Transmission (6MT):</b>		
First Gear	3.454	–
Second Gear	1.888	–
Third Gear	1.296	–
Fourth Gear	0.972	–
Fifth Gear	0.780	–
Sixth Gear	0.695	–
Reverse Gear	3.636	–
Final Drive Ratio	4.444	–
<b>Lineartronic® CVT (Continuously Variable Transmission) – simulated manual mode:</b>		
First Gear	3.581	3.505
Second Gear	2.262	2.238
Third Gear	1.658	1.641
Fourth Gear	1.208	1.194
Fifth Gear	0.885	0.880
Sixth Gear	0.618	0.611
Reverse Gear	3.667	2.345
Final Drive Ratio	3.700	4.111
<b>Lineartronic® CVT (Continuously Variable Transmission) – SI-DRIVE (S#):</b>		
First Gear	–	3.505
Second Gear	–	2.270
Third Gear	–	1.752
Fourth Gear	–	1.417
Fifth Gear	–	1.170
Sixth Gear	–	0.968
Seventh Gear	–	0.785
Eighth Gear	–	0.611
Reverse Gear	–	2.345
Final Drive Ratio	–	4.111

Product details based on the latest information available at the time of publication and are subject to change without notice or incurring obligation. © 2013 Subaru Canada, Inc.

● Standard  
 – Not Available

**CP** Standard with Convenience Package  
**TP** Standard with Touring Package  
**LP** Standard with Limited Package

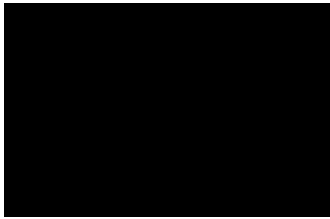
○ Optional  
 1 Also available as an accessory

# 2014 FORESTER

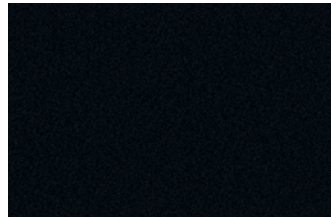
## EXTERIOR COLOURS



Burnished Bronze Metallic



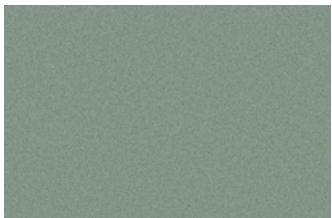
Crystal Black Silica



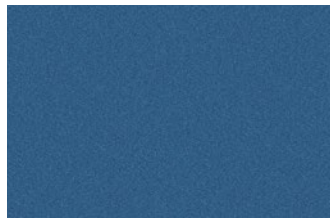
Dark Grey Metallic



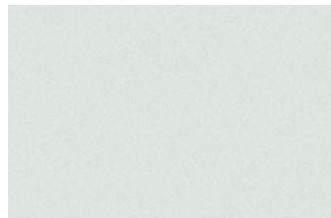
Ice Silver Metallic



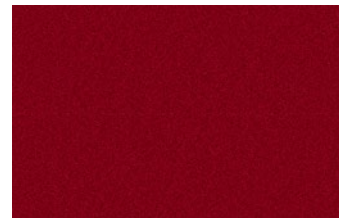
Jasmine Green Metallic



Marine Blue Pearl

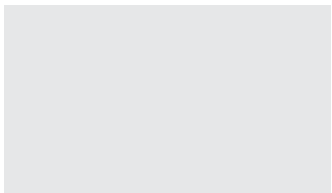


Satin White Pearl

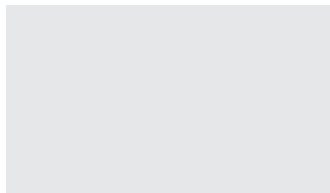


Venetian Red Pearl

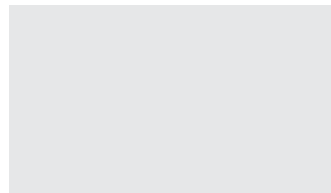
## UPHOLSTERY



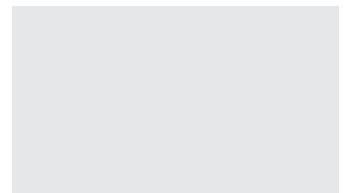
Onyx Black Cloth



Platinum Grey Cloth



Onyx Black Leather



Platinum Grey Leather

## WHEELS



17-inch styled Steel  
(2.5i)



17-inch Aluminum Alloy  
(2.5i Convenience Package,  
PZEV option, Touring Package,  
Limited Package, EyeSight™ option)



18-inch Aluminum Alloy  
(2.0XT Touring, Limited Package,  
Limited Package with EyeSight™ option)

Product details based on the latest information available at the time of publication and are subject to change without notice or incurring obligation. © 2013 Subaru Canada, Inc.

# 2014 FORESTER

## VEHICLE PRICING

MODEL	ENGINE	TRANSMISSION	MODEL CODE	MSRP
2.5i	2.5L DOHC	6MT	EJ1 XO	TBA
	2.5L DOHC	CVT	EJ2 XO	TBA
2.5i Convenience Package	2.5L DOHC	CVT	EJ2 CP	TBA
2.5i Convenience Package with PZEV Option	2.5L DOHC	CVT	EJ2 PZ	TBA
2.5i Touring Package	2.5L DOHC	6MT	EJ1 TP	TBA
	2.5L DOHC	CVT	EJ2 TP	TBA
2.5i Limited Package	2.5L DOHC	CVT	EJ2 LP	TBA
2.5i Limited Package with Eyesight™ option	2.5L DOHC	CVT	EJ2 LPE	TBA
2.0XT Touring	2.0L DOHC TURBO	CVT	EJ2 XT	TBA
2.0XT Limited Package	2.0L DOHC TURBO	CVT	EJ2 XTL	TBA
2.0XT Limited Package with Eyesight™ option	2.0L DOHC TURBO	CVT	EJ2 XTE	TBA

ALL PRICES ALONG WITH SPECIFICATIONS ARE SUBJECT TO CHANGE WITHOUT NOTICE. THE DEALER MAY SELL BELOW SUGGESTED RETAIL WITHOUT FEAR OF RECRIMINATION FROM SUBARU CANADA, INC. MSRP SHOWN EXCLUDES EXCISE TAX FOR AIR CONDITIONING, INLAND FREIGHT AND PRE-DELIVERY CHARGES. MSRP DOES NOT INCLUDE APPLICABLE TAXES.

## COLOUR AVAILABILITY

EXTERIOR COLOUR	COLOUR CODE	2.5i						2.0XT Touring		
		EJ1 XO EJ2 XO	Convenience Package		Touring Package	Limited Package	EyeSight™ option	EJ2 XT	Limited Package	EyeSight™ option
			PZEV Option	EJ2 CP						
		EJ1 TP EJ2 TP	EJ2 LP	EJ2 LPE	EJ2 XTL	EJ2 XTE				
Burnished Bronze Metallic	4Q	20	20	20	20	20	20	20	20	20
Crystal Black Silica	4S	20	20	20	20	20	N/A	20	20	N/A
Dark Grey Metallic	1K	10	10	10	10	10	10	20	20	20
Ice Silver Metallic	1U	20	20	20	20	20	20	20	20	20
Jasmine Green Metallic	5Q	10	10	10	10	10	10	20	20	20
Marine Blue Pearl	9H	10	10	10	10	10	10	20	20	20
Satin White Pearl	7J	20	20	20	20	20	20	20	20	20
Venetian Red Pearl	2Q	20	20	20	20	20	20	20	20	20
INTERIOR TRIM		Cloth	Cloth	Cloth	Cloth	Leather	Leather	Cloth	Leather	Leather

20 : Onyx Black interior 10 : Platinum Grey interior

Product details based on the latest information available at the time of publication and are subject to change without notice or incurring obligation. © 2013 Subaru Canada, Inc.